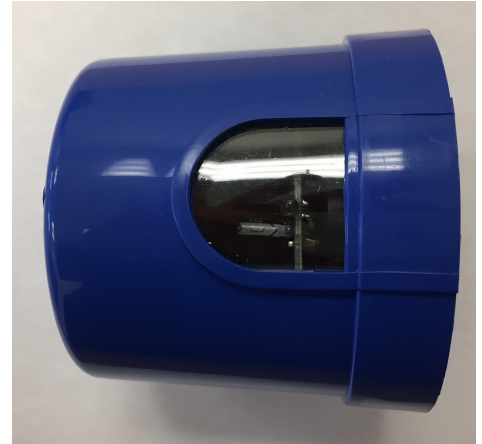


## GW-241-242-243 INTELLIGENT DIMMING CONTROL

The GW-241-242-243 dimming photocontrol series can be used to automatically control LED street lighting in accordance with the ambient natural light level. This product is designed with microprocessor circuits and an IR-filtered silicone sensor. A heavy-duty surge arrester (MOV) is provided to protect the fixture and control from surges. A Preset 10 second time-delay prevents excessive operation due to spotlights or lightening during the night. A heavy-duty relay is rated for over 15,000 cycles. The product is available with optional metal armor for longer life.

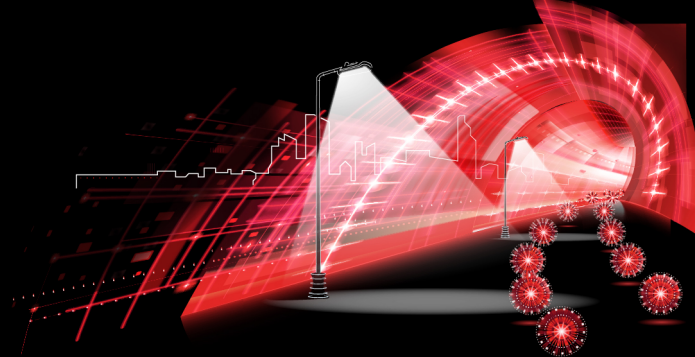


### FEATURES

- 0-10V dimming
- 105-305 VAC
- IP65 ready / IP67 optional
- 40kA surge arrester
- IR-filtered photodiode sensor
- Midnight dimming
- LED decay compensation
- Fail-on mode
- Metal armor for longer life (optional)
- 0.105"-thick cover



05/13/2018



## INTELLEAGENT DIMMING CONTROL GW-241-242-243

### FEATURES

Model	GW-241	GW-242	GW-243
Constant On/Off Dimming	•	•	•
Midnight Dimming		•	•
LED Decay Compensation*			•

\* LED decay compensations, also called lumen depreciation compensation, increases dimming voltage based on burning hours of LED fixture. Consult factory for full details.

### TECHNICAL DATA

Rated Voltage	110-277VAC, 50/60Hz
Applicable Voltage Range	105-305VAC, 50/60Hz
Rated Loading	1000W Tungsten, 1800VA Ballast, 5A e-Ballast
Power Consumption	1.2W Average
Typical On/Off Level	50 Lux
Typical Time Delay	10 Sec
Typical Surge Protection	640 Joule / 40000 Amp
Typical IP Protection	IP65
Dielectric Strength	5000 Vrms
Ambient Temperature	-40 ~ +70 °C
Related Humidity	99%
Overall Size	84(Dia.) x 86mm
Weight (approx.)	200 gr

